

HOTBODIES RACING.COM

Yamaha YZF-R1 Undertail Kit

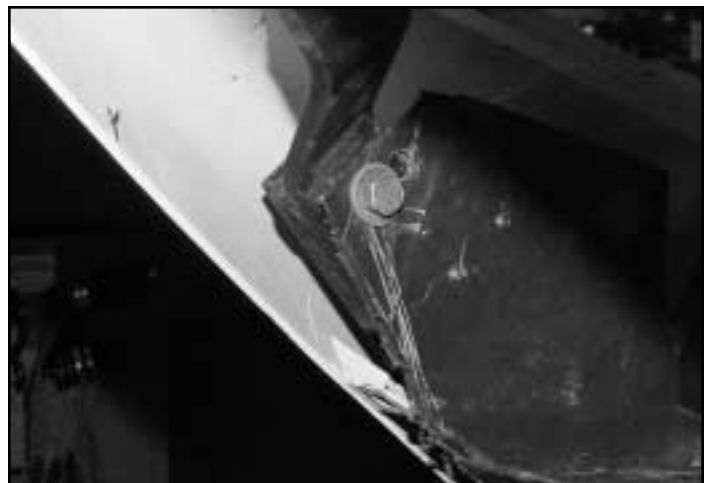
(1998-99, Available in: Pearl White or Yamaha Blue)

HOTBODIES RACING RECOMMENDS THAT YOU HAVE A PROFESSIONAL MECHANIC PERFORM THIS INSTALLATION. IF YOU CHOOSE TO "DO-IT-YOURSELF" ALWAYS TAKE APPROPRIATE SAFETY MEASURES WHEN INSTALLING THIS PRODUCT AND USE SAFETY GOGGLES AND LEATHER GLOVES. CAREFULLY READ ALL INSTRUCTIONS BEFORE BEGINNING THE INSTALLATION PROCESS! HOTBODIES RACING WILL NOT REPLACE YOUR STOCK GLOVE-BOX FOR ANY REASON, MEASURE TWICE AND CUT ONCE!

- 1) Carefully remove the tail section body work. Save all bolts, washers and plastic rivets for re-installation of tail. Disconnect and remove the brake light (with all mounting grommets and washers), license plate and turn signals and move all wiring out of the cutting areas. Remove the two bolts at the rear end of the stock fender (inside glove box) to allow the end to hang down for cutting.

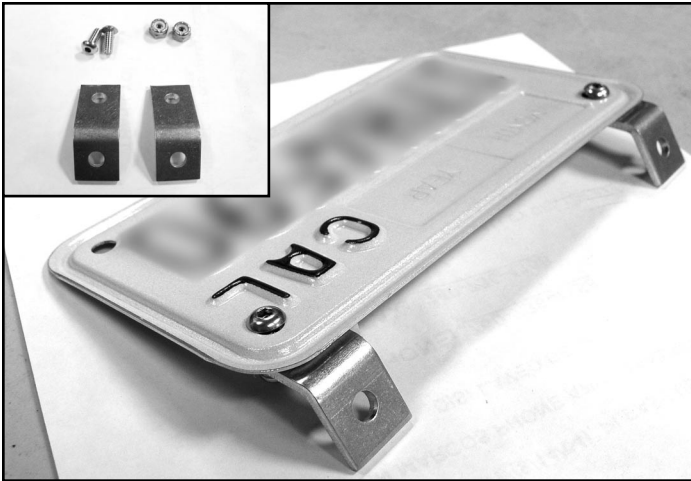


- 2) Using a "Dremel" tool or cutting disc (this can also be done using a sharp edged knife, but is not recommended), remove the plastic shown in the photos above. Be sure to take your time cutting, so that you don't cut away any more plastic than necessary.

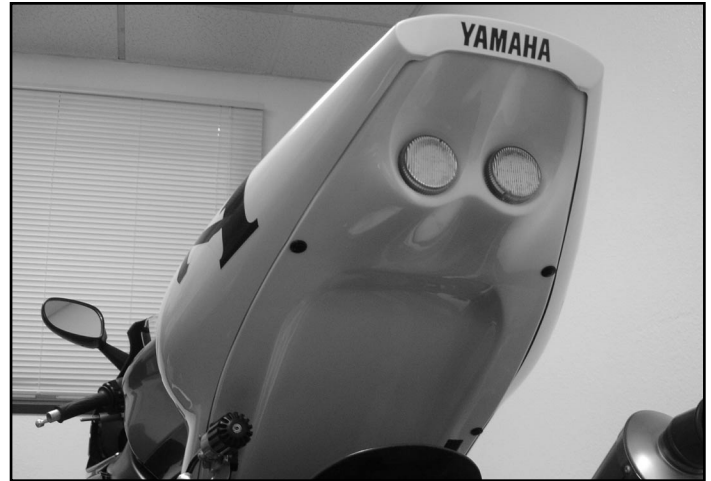


- 3) Now relocate the rear mounting holes for the glove box .75" lower in the tray to raise it up in the subframe as shown.

READ CAREFULLY BEFORE INSTALLATION! This undertail like all undertails has been designed for off road racing use only, and has not been presented for D.O.T. certification! Hotbodies Racing Inc., our distributors, and our dealers will NOT be responsible for the use or misuse of this product. Always check with your local Department of Motor Vehicles before modifying any aspect of your motorcycle.



5) *Install license plate brackets to back side of license plate as shown. Now hold license plate in desired location on undertail, carefully mark and drill holes, install using the two (2) sets of allen bolts and lock nuts.



7) Re-install stock tail section leaving the mounting hardware loose to allow the undertail to shift into position. Insert undertail left side first, then right side, be careful not to crack or scratch undertail. Use your stock plastic screw rivets to hold undertail in place, start from the top and work your way to the bottom. Tighten all hardware on the tail section, attach seat. Your done!

WIRING INSTRUCTIONS:

Connect the right (dark green wire) and left signal (brown wire) wires on the bike, to the respective right/left orange wires on the undertail. Connect the ground wires (black) to the black wires on the undertail. Connect the brake wires (yellow) to the red wires on the undertail and connect the running light wires (blue) to the blue wires. Your done!

** After this modification your undertail is not returnable. Paint is not warranted against paint chips, flaking or scratches from installation or rocks being thrown from tire into the tray.*

Need Help? If you need additional help with the installation of the undertail, go to www.hotbodiesracing.com and look for the "FAQs" link at the bottom of the home page. Most of your general questions can be answered on those pages. This installation does require a basic mechanical aptitude, if in doubt, contact your local motorcycle shop and have a professional mechanic perform the installation, 3 hours is the average installation time.